



RFIDTagManager Sam's Club Version 3.5

Copyright © epcSolutions, Inc. 2007

epcSolutions RFIDTagManager for Sam's Club

Function Brochure

epcSolutions RFIDTagManager™ v3.5 runs as a epcSolutions' SensorOS application—with the ability to run as a stand alone compliant solution, or fully integrated with your back end systems, such as WMS or ERP applications, featuring fixed/mobile RFID readers and smart label RFID printer/encoders.

Licensing allows for flexibility:

- Basic – Connects to 2 network devices
- Professional – Up to 5 network devices
- Professional Plus – Up to 10 network devices

SensorOS

An operating system for RFID. SensorOS allows for connectivity and communication between applications and the peripheral sensor/RFID hardware devices on the network.

RFIDTagManager's easy-to-use wizard aids in the configuration of an RFID network of hardware and software, allowing for:

- Label printing & tag encoding
- Tag validation/verification
- Network device monitoring & management
- Reporting functions
- Database Management including administrative options
- Programmatic interface to order import, print and reporting functions via the RFIDTagManager SDK



Representative
Back end System
Integrations

- WMS
- Oracle
- SAP
- Manhattan
- Blue Cherry
- Informix
- JD Edwards
- AS400/DB2
- Highjump

System Compatibility:

- Runs on Windows XP
- 512 MB of Memory
- Pentium 4 Processor or equivalent
- 100MB of free disk space

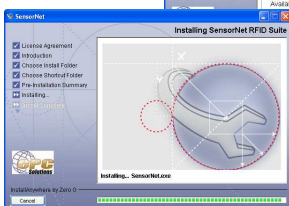
Connect the
Handheld to your
WAN and start
Mobile
RFIDTagManager



R1 Insert an
RFIDTagManager
™ CD
into your CD/DVD
drive



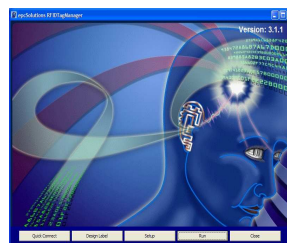
R2 Click through the
installation wizard and
select your options.



Follow the on
Screen instructions
To install Mobile
RFIDTagManager



Click RFIDTagManager icon to start the app



Choose "Setup" or "Run"
from the main menu



Enter the Setup Wizard to
create your RFID network,
build in your trading partner
rules, and set addresses
and label formats

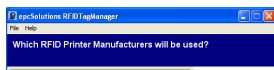




Click through the **RFIDTagManager** wizard to set-up:

RFID Readers

RFID Printers



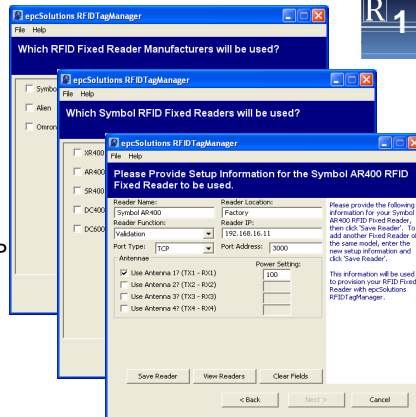
Select printer brand(s)



Select barcode or RFID printer(s)



Configure the IP address, port, and location information for each printer



Select reader brand(s)



Select reader model(s)



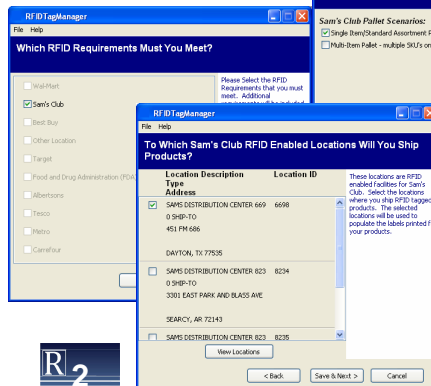
Configure the IP address, port, and location information for each reader



Select the Sam's Club pallet scenarios

Sam's Club Requirements

Select Sam's Club RFID requirements

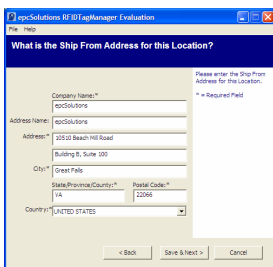


Select the Sam's Club RFID enabled location you ship to



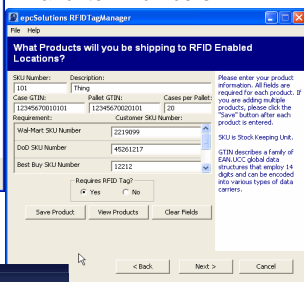
Create Sam's Club pallet label formats

Ship From: Address



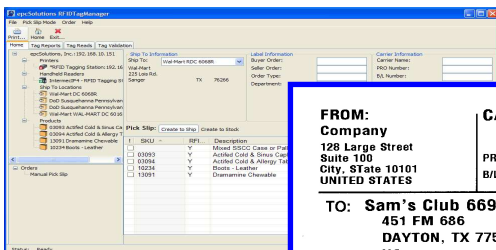
Product GTINs

Enter SKUs, GTINs, and item numbers



Input Orders

Select your current order to Sam's Club and manually enter order information that you want included on the label, including carrier information



Encode & Print Labels

After all data has been entered, select the number of case and pallet tags to fulfill the order and click on "Print."



FROM:
Company
128 Large Street
Suite 100
City, State 10101
UNITED STATES

TO: Sam's Club 6698
451 FM 686
DAYTON, TX 77535
US

(420) SHIP TO POSTAL CODE (420) 77535

ORDER# WM 10101
LOC# TYPE DEPT
6698 98U7 H7877
WMIT: SKU101

PALLET
3014000000C3500000000019

ORDER# SAM0919191
ITEM# SKU101
DESC: Item 101

Serial Shipping Container Code
(00) 0 1234567 000000059 6



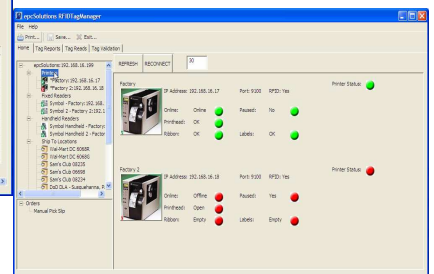
Read Tags

When a tag enters the read range of a reader, click on the "Readers" tab to view tag reads. Current reads appear in bold.



Monitor Devices

Click on the device icon and know immediately if there is a connection problem, if a printer is out of media, or if a printer head is open



Validate Tags

Using an RFID reader to read the tag will ensure that each RFID tag is valid before it leaves the tagging facility. If you ship unreadable labels to Sam's Club, they are going to be returned.

